

# MOTIFS DE REFUS DE LA DECONSIGNE

OK

NO OK



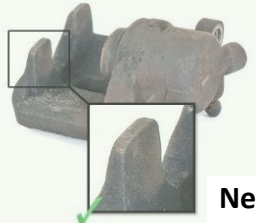
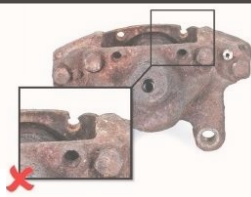
Manque patte



Etrier cassé



Trou de fixation endommagé



Nez limé par le disque de frein



Manque nez

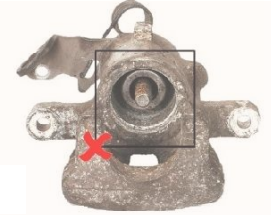


OK

NO OK



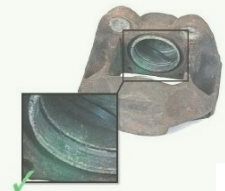
Manque piston



Filetage intérieur endommagé



Filetage cassé



Etrier fissuré



Etrier endommagé

